

Petrographic and Structural Study Contribution in the Comprehension of the of Gold Mineralisation in the Biboko Area (betare-oya Gold District), East-Cameroon

Ismaila Ahmadou^{1,2,*}, Mana Bouba Christian^{1,2}, Ipan Antoinette Solange^{1,3},
Aboubakar Abdoulaye Sahabo^{1,4}, Sep Nlonngan Jean Paul¹,
Yinyang Wanbitching Raoul², Mohamadou Sali⁵, Tchameni Rigobert²

¹Centre for Geological and Mining Research, P.O Box 333, Garoua, Cameroon,
(Institut of Geological and Mining Research, Cameroon)

²Department of Earth Sciences, University of Ngaoundere, P.O Box 454 Ngaoundere, Cameroon

³Departement of Earth Sciences, University of Yaounde I, P.O Box 812 Yaounde, Cameroon

⁴Research Centre for Geophysics and Volcanology, P.O Box 370 Buea, (Institut of Geological and Mining Research, Cameroon)

⁵Ministry of environment, protection of nature and sustainable development: departmental delegation of Mbéré

*Corresponding author: ahmadouismaila2@gmail.com

Received March 13, 2022; Revised April 17, 2022; Accepted April 26, 2022

Abstract The Biboko locality is located eastward in the central domain of the Pan-African Fold Belt of Central Africa. The task consisted in the cartography of the various types of rocks, to do their petrographic and structural studies with the aim of understanding the geological context of gold which is to be exploited in the locality. We also brought out the study of environmental impact generated by this exploitation. The main types of rock identified in the locality could be grouped into two: the metamorphic and plutonic rocks and their associated intrusion. The metamorphic rocks are represented by amphibole-biotite orthogneisses and amphibolites. Their main texture is granoblastic. The primary assemblage is made up of amphibole, biotite, plagioclase, quartz, zircon and apatite which are in equilibrium in the amphibolite facies. The secondary assemblage is made up of quartz, biotite, chlorite, pyrite, sericite derived from either the alteration or the recrystallization of the primary assemblage. The plutonic rocks are slightly deformed and are represented by biotite bearing tonalite, microcline bearing granite, biotite bearing granite, biotite-epidote granite. These rocks have a grain-oriented texture made up of quartz + microcline + orthose + plagioclase +/- biotite + accessory minerals. Concerning the structural study of the area, we have four deformational phases. The first phase D1 is characterized by subhorizontal shistosity/ foliation. The second phase D2, characterized by open folds P2, shistosity S2, subvertical to vertical and slightly plunging lineation L2. It is a transpressive deformation with sinistral sheared planes. The migmatization which is the origin of certain plutonic rocks is syn-D1 to syn-D2. The third phase which is not penetrative, is made of folds P3 with straight axes and crenulation S3. The fourth phase is brittle-like and characterized by fractures. The abundances in secondary minerals (microcline, pyrite, chlorite, sericite) in certain facies (microcline bearing granite) is a proof for hydrothermalism. Part of gold found at Biboko could have been derived from altered rocks in the region. This is proved by the presence of quartz in an intrusion slightly mineralized in pyrite which is an associated mineral of gold.

Keywords: *Petrographic, structural, Biboko, Amphibolites facies, hydrothermalism*

Cite This Article: Ismaila Ahmadou, Mana Bouba Christian, Ipan Antoinette Solange, Aboubakar Abdoulaye Sahabo, Sep Nlonngan Jean Paul, Yinyang Wanbitching Raoul, Mohamadou Sali, and Tchameni Rigobert, "Petrographic and Structural Study Contribution in the Comprehension of the of Gold Mineralisation in the Biboko Area (betare-oya Gold District), East-Cameroon." *Journal of Geosciences and Geomatics*, vol. 10, no. 2 (2022): 74-80. doi: 10.12691/jgg-10-2-1.

1. Introduction

The Central African Fold Belt (CAFB) in Cameroon is divided into three domains [1]: the Southern domain which borders the Congo Craton, the Central (Adamawa-

Yadé) domain characterized by the presence of many fault corridors (Sanage Fault, Adamawa Fault, Tcholliré Fault), and the Northern domain which crops out in the north-west of the Tcholliré fault. In the eastern part of the Central domain, we have the Neoproterozoic Lom Serie [2]. Regional geologic works on the Lom Serie permitted to: (1) realize a geological map [2]; (2) to do a

structural study of the serie [3,4]; (3) to do geochronologic and isotopic geochemistry studies [3,4]. The Lom Serie abounds in metals and precious stones; notably gold which is subject of artisanal and semi-artisanal exploitation in many localities of the Lom basin [5]. The anarchic characteres of mining activities in the region generates negatives consequences on environment and mining workers health [6]. A petrographic and structural study in view to realize geologic map at large scales may contribute to the reduction of environment destruction by mining workers without a structural guide of mineralization.

The Biboko area which is subject to this study is situated in the North-West of the Bétaré-Oya town, Lom Serie. It is characterized by a gold exploitation activity which do not respect the environment. The aim of this study is to study the geological context of gold mineralization of the Biboko area.

2. Geological Setting

The Biboko area is situated in the East region of Cameroon, in the Bétaré-Oya gold district, whiting

coordinate system $5^{\circ}38' - 5^{\circ}42'$ latitude north and $13^{\circ}46' - 13^{\circ}21'$ longitude east, and belong to the Adamawa-Yadé domain. In Cameroon, the CAFB is divided into three domains: (1) the Southern domain which extends from the Congo craton to the Adamawa-Yadé domain; (2) The Central or Adamawa-Yadé domain is located between the Sanaga fault in the south and the Tcholliré-Banyo shear in the north; (3) the Northern domain located west of the Tcholliré-Banyo Fault (Figure 1) [1,7]. The Adamawa-Yadé domain is made up of palaeoproterozoic and neoproterozoic formations. palaeoproterozoic formations include: metasedimentary and volcanosedimentary rocks (amphibole-biotite gneiss, garnet-biotite gneiss, meta-arkoses, metaquartzites, garnett-pyroxene amphibolites iron formations.) [1,8]; plutonik rocks which are migmatized and completely reworked during the Panafrican orogeny, they are motly composed of diorite and granodiorite [9,10,11]. The neoproterozoic formations are made up of schists which form narrow furrows called Lom Serie. The Lom Serie have been subject to a regional epi to mesozonal metamorphism in green schist facies to amphibolite facies [2,12] suggested that the Lom Serie is a syn-to post collusional basin.

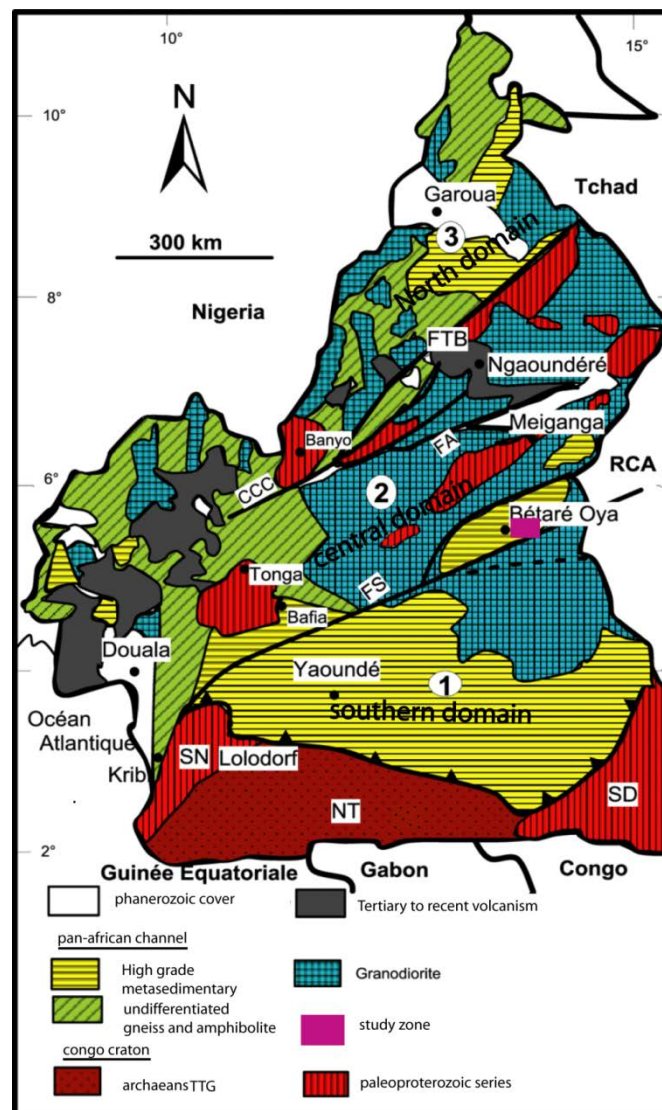


Figure 1. Geological map of Cameroon edit from [15] showing the main lithological domains: (1) South domain; (2) central domain; (3) North domain; CCC: Central Cameroonian Shear; FS: Sanaga Fault; FTB: Tcholliré-Banyo Fault; NT: Ntem complex; SD: dja series; SN: Nyong series; FA: Adamaoua Fault

The Adamawa-Yadé present three deformations phases (D_1 , D_2 , D_3): D_1 is characterized by a flat foliation [1,10,13,14]); the D_2 deformational phase is characterized by the development of tight faults [1]; the D_3 deformational phase is essentially brittle, and characterized by C_3 shear planes.

3. Methodology

The methodology consist of field works, and laboratory works.

3.1. Field Works

Standard field equipment was used to carry out field study. Various rocks types were identified by using hammer prospection. Rocks were systematically described using observable field parameters (color, mineralogy and structure) and sampled. Structural elements were also identified and measured. The relative chronology of tectono-metamorphic and magmatic events was also established.

3.2. Laboratory Study

After collecting samples in the field, we cut the eleven (11) sugars from the rocks at the litholamelage laboratory of the Center for Geological and Mining Research (CRGM) in Garoua. From its sugars we had made the thin sections at the litholamelage laboratory Georesources of the University of Lorraine in France. Petrographic observations were performed using an ordinary microscope and a reflexive light microscope at the Laboratory of Georesources of the University of Lorraine

in France; and by a monocular microscope at the “laboratory of Cartography, Petrography, geochemistry and Metallogeny of the University of Ngaoundéré”.

The structural data allowed the realization of the stereograms. To do this we used the "Stereo 32" software to materialize the linear and stereo net elements and COREL DRAW to materialize the plans. Its different processing of structural measurements allowed us to classify and interpret the different phases of deformation that affected the area.

4. Results

4.1. Petrography

The Biboko area is made up of metamorphic and plutonic rocks.

4.1.1. Metamorphic Rocks

Metamorphic rocks consist of amphibole-biotite orthogneiss and amphibolites.

Amphibole-biotite orthogneiss is the most abundant rock type of the region. It appear as pluri-decametric subhorizontal flagstones (Figure 2 a and Figure 2b). It present a foliated or striped structure (Figure 2 a). It display discontinuous alternating quartzo-feldpathic and ferromagnesian rich layers. At microscopic scale, the orthogneiss present a granolepido or a granonematoblastic texture (Figure 2c and Figure 2d). The paragenesis is made up of biotie+amphibole+quartz+orthose+plagioclase (Figure 2c and Figure 2d), accessory minerals as apitite, opaques minerals zircon and sphene. secondary minerals are chlorite and epidote.

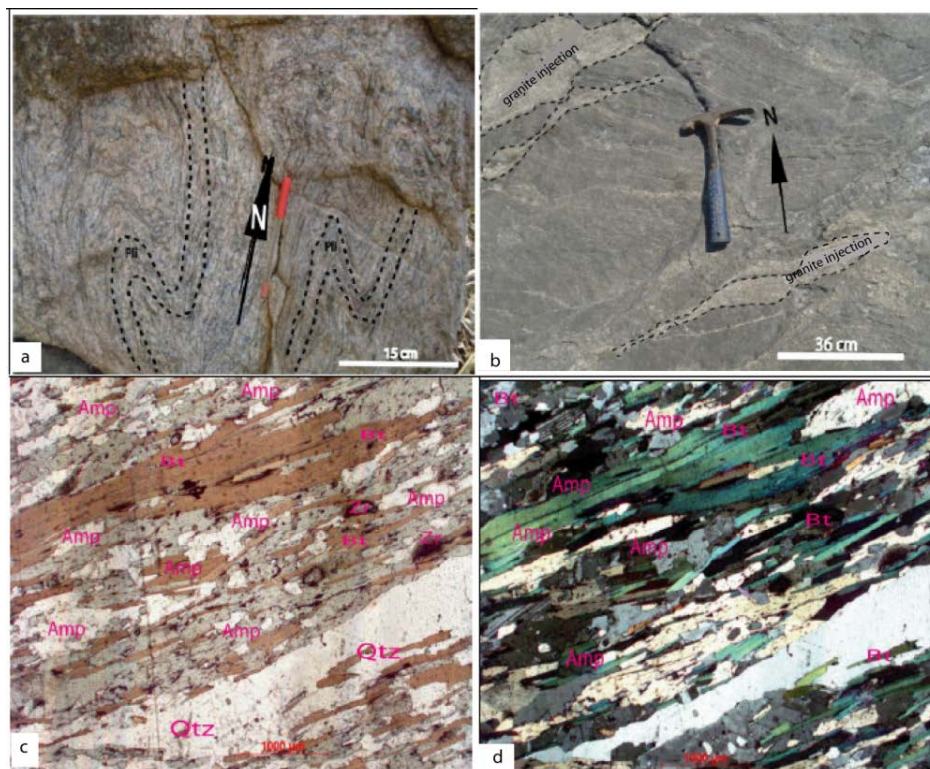


Figure 2. a- Foliated and folded structure of biotite and amphibole orthogneiss; b- Orthogneiss containing granite injections in the foliation and shear planes, c- Granonemato- to lepidogranoblastic texture of orthogneiss in LPNA, d- Granonemato- to lepidogranoblastic texture of orthogneiss in LPNA



Figure 3. a- Amphibolite enclave in an orthogneiss slab; b- Amphibolite septa in orthogneiss affected by granite; c- Granonematoblastic texture of amphibolites in LPNA, d- Granonematoblastic texture of amphibolites in LPA

Amphibolites outcrop as fusiform enclaves of variable size scales (centimetric to decametric) in orthogneiss and granites (Figure 3a and Figure 3b), or are embedded as layers in orthogneiss (Figure 3a). Amphibolites are foliated and present medium to fine grain sizes. At microscopic scale, they present a granonematoblastic texture (Figure 3 c and Figure 3d); they also present a granolepidoblastic texture in level where leucocrates veins are abundant. The paragenesis is made up of amphibole+plagioclase+quartz and accessory minerals as

sphene, opaque minerals, apatite, zircon. Secondary minerals are chlorite, epidote, actinote, pyrite (Figure 3c and Figure 3d).

4.1.2. Plutonick Rocks

Plutonock rocks crop out as big massifs locally called “Kaya” or “Ngari”. They are slightly deformed and represented by: biotite tonalite, microcline granite, biotite granite and biotite-epidote granite.

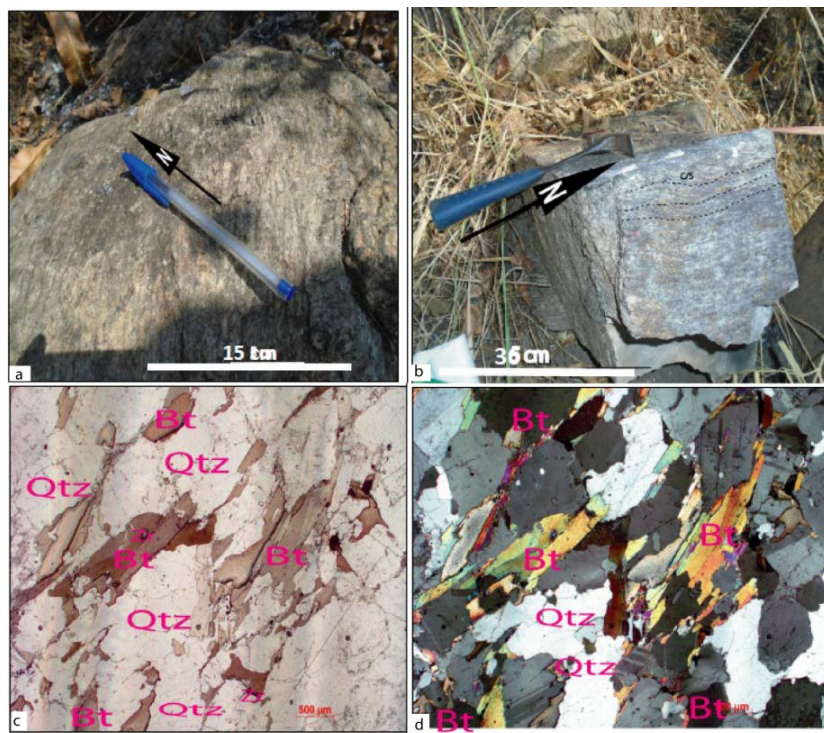


Figure 4. a- Biotite tonalite block outcrop; b- Biotite tonalite blocks showing the C and S sub-horizontal planes; c-oriented grainy texture of biotite tonalite in LPNA; d-Oriented grainy texture of biotite tonalite in LPA

Biotite tonalite crop out as centimetrics to decametrics flagstones (Figure 4 a and Figure 4b); it present an oriented grainy structure, but also a mylonitic structure at some places. At microscopic scale, it present an oriented grainy texture (Figure 4b). The paragenesis is made up of plagioclase+quartz+biotite with accessory minerals as sphene, apatite, zircon and opaques minerals (Figure 4 c and Figure 4d); secondary minerals are present as recrystallization products (quartz, plagioclase, k-feldspar, biotite), and by epidote and sericite.

The microcline granite present an oreinted grainy structure, and is characterized by a pink color due to the orthose abundance. It is cross-cut by many quartz veins. Microscopically, it present an oreinted porphyroïd grainy texture (Figure 5a), inclined to a granoblastic texture in high recrystallized facies (Figure 5 b). The paragenesis is

made up of quartz+K-felspar+biotite+pyrite and accessory minerals as sphene, apatite, opaques minerals, zircon.

Biotite granite crop out as decametrics (Figure 6 a) as smalls massifs formed by metrics to hectometrics blocks. It present a medium to coarse grain size. At the microscope scale, it present a grainy texture (Figure 6 b). The paragenesis is made up of biotite + orthose + plagiocle + quartz, accessory minerals are sphene and apatite.

Epidote-biotite granite crops out as decametrics blocks (Figure 7 a). Microscopic observation show that rock present a grainy texture and is composed of orthose + plagioclase +quartz+biotite+epidote (Figure 7 b); accessory minerals are apatite, zircon and opaques minerals (Figure 7 b). All these rocks are cross-cut by quartz, quartzo-feldspatic and granitic veins.

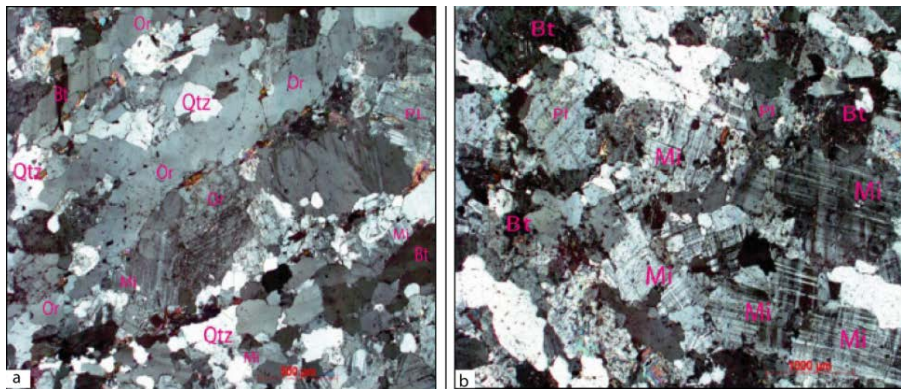


Figure 5. a- Oriented grainy texture seen in LPA in a microcline granite; b- LPA grainy texture showing recrystallized microcline crystals

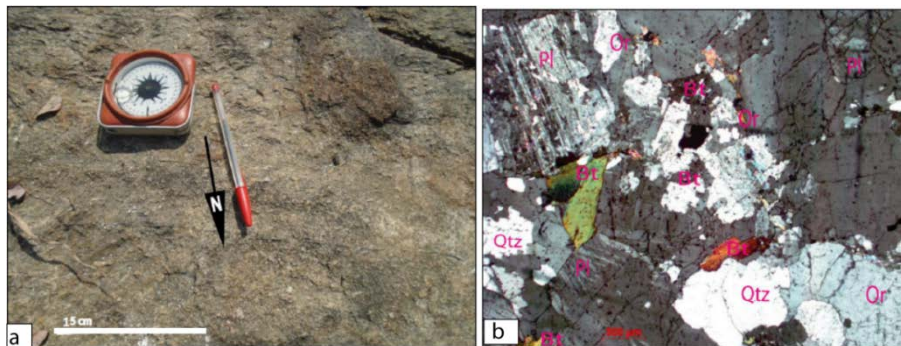


Figure 6. a-Biboko biotite granite outcrop; b-Grainy texture of LPA biotite granite



Figure 7. a- block of biotite and epidote granite; b- Granite biotite and epidote in LPA

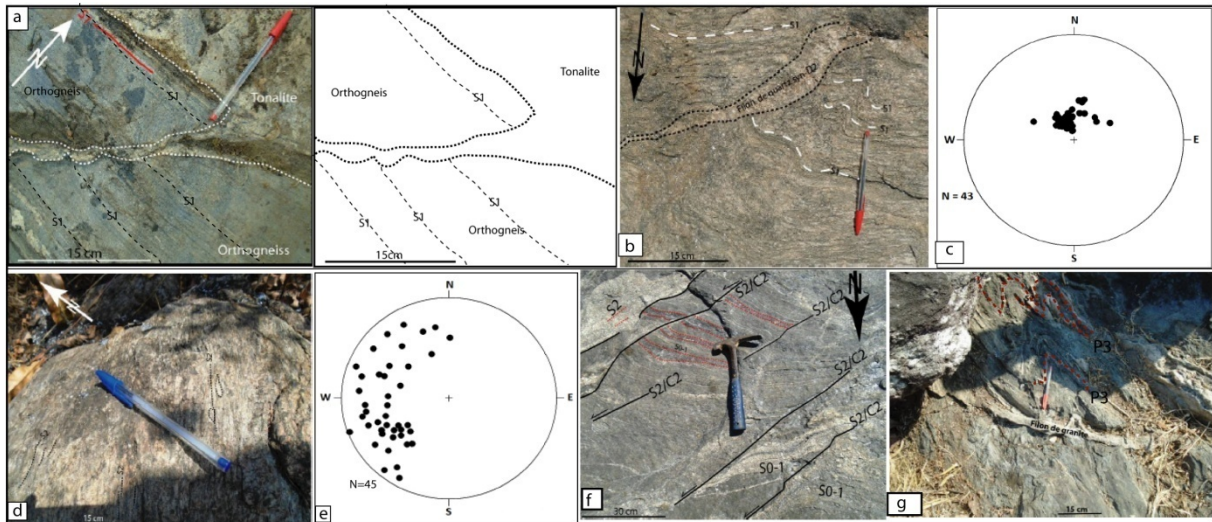


Figure 8. a- S1 foliation in an orthogneiss marked by the alternation of beds of different composition; b- Schistosity S1 in the gneiss marked by the debitage in subhorizontal millimetric plates of the rock; c- Stereogram of S1 foliation in the Biboko orthogneisses; d- Trace of the S2 schistosity in a deformed tonalite; e- Stereogram of the S2 schistosity in the Biboko orthogneiss; f- Planes C2 affecting surfaces S0-1; g- Vertical axis P3 fold

4.2. Structural

The Bikoko area was affected by four deformational phases: D₁, D₂, D₃, D₄. The D₁ deformational phase is marked by a S₁ foliation and schistosity. The schistosity is characterized by the mineral recrystallization following a maximal flattening plan (Figure 8 a). S₁ foliation is characterized by an alternating quartzo-felspathic and ferromagnesian layers (Figure 8 b). The S₁-0 surface is generally reinforced by different type of veins as migmatization products. The S₁ schistosity and foliation are horizontal or subhorizontal with a general orientation ENE-WSW to ESE-WNW. In the stereogram, the poles of the foliation planes align along the great circle along the ENE-WSW to ESE-WNW direction (Figure 8 c). The D₂ deformational phase is materialized by F₂ folds, S₂ schistosity (Figure 8 d), C₂ shear planes and B₂ boudins. F₂ folds are symmetric and varies with the deformation intensity. S₂ schistosity correspond to the axial plan trace of F₂ folds (Figure 8 d); S₂ orientation varies between N-S and NW-SE. C₂ shear planes are present on deformed metamorphics and plutonics rocks. The stereograms of the S₂ schistosity, in the orthogneiss and in the deformed granites show that the poles are concentrated in the NW and SW quadrants and are aligned on the great circle of attitudes N170E18SSE (Figure 8 e) these poles correspond to the axes of the P₃ folds. The D₃ deformation is characterized by P₃ folds which are undulation of folds sides and hinges (Figure 8 e). S₃ schistosity is a crenulation. The D₄ is characterized by faults and veins (Figure 8 f). Many generations of vein have been identified: F₂ which are earlier to synD₁, F₂ which are syn-D₂, and F₃ faults (Figure 8 g) which are post D₂ and cross-cut D₂ structures. Pyrite and tourmaline bearing quartz veins are post D₃ and oriented N-S. In general veins are oriented N160E.

5. Conclusion

The Biboko area in the Bétaré-Oya gold district have been subject to a petrographic structural and environment study in order to know the geological context of gold

mineralization, and to highlight the impact of the gold exploitation on the environment and mining workers health. The lithology is made up of metamorphic rocks (amphibole-biotite orthogneiss and amphibolites) which present paragenesis linked to amphibolite facies; and plutonics rocks (biotite tonalite, microcline granite, biotite granite and biotite-epidote granite) which have been classified into syn-tectonic, late-tectonic and post-tectonic granitoids. The Biboko tectonics display four deformational phases D₁, D₂, D₃, D₄. The D₁ is characterized by the S₁ foliation and schistosity. D₂ is materialized by F₂ folds, S₂ schistosity, C₂ shear planes and B₂ boudins; D₃ is characterized by F₃ folds which correspond to the regional folding; and D₄ is represented by faults and veins and is due to the NE-SW extension.

References

- [1] TOTEU S.F., PENAYE J., POUJOMDJOMANI Y. 2004. Geodynamic evolution of the Pan-African belt in central Africa with special reference to Cameroon. *Can. Journ. Earth Sci.*, 41: 73-85.
- [2] SOBA, D., 1989. La série de Lom: étude géochronologique d'un bassin volcano-sédimentaire de la chaîne panafricaine à l'Est du Cameroun. Thèse d'état, Université de Paris VI, Paris.
- [3] NGAKO, V., AFFATON, P., NNANGE, J. M. NJANKO, TH. (2003). Pan-African tectonic evolution in central and southern Cameroon: transpression and transtension during sinistral shear movements. *J. Afr. Earth sci.* 36: 207-214.
- [4] KANKEU, B., GREILING R.O., NZENTI J.P., (2009). Pan-African strike-slip tectonics in eastern Cameroon-Magnetic fabrics (AMS) and structure in the Lom basin and its gneissic basement. *Precambrian Research* 174 (2009) 258-272.
- [5] NTEP GWET, P., ADELIN T., 2005. Etude environnementale du barrage de Lom Panga. Etude mines-thème n°11 – phase 4: rapport défini tiff après consultation. 113p.
- [6] PAHIMI, H., C. R PANDA., NGASSOUM M.B., TCHAMENI R., (2015). Environmental Impacts of Mining in the Volcano-Sedimentary Basins of Cameroon: Case Study of Artisanal Gold Mine Tailings (Betare Oya, East-Cameroon). *International Journal of Energy, Sustainability and Environmental Engineering* Vol. 2 (1), September 2015, pp. 5-15.
- [7] VAN SCHMUS, W. R., OLIVEIRA E. P., DA SILVA FILHO A. F., TOTEU S. F., PENAYE J., GUIMARAES I. P., (2008). Proterozoic links between the Borborema Province, NE Brazil, and the Central African Fold Belt. *Geological Society, London, Special Publications* 294(1), 69-99.

- [8] Ganwa A.A., Frisch W., Siebel W., Ekodeck G.E., Shang K.C., and Ngako V. 2008. Archean inheritances in the pyroxene-amphibole-bearing gneiss of the Meiganga area (Central North Cameroon): Geochemical and $^{207}\text{Pb}/^{206}\text{Pb}$ age imprints: *Comptes Rendus Geosciences*, 340: 211-222.
- [9] LASSERRE, M. (1967). Données géochronologiques nouvelles acquises au 1er Janvier 1967 par la méthode au strontium appliquées aux roches cristallophylliennes du Cameroun. *Annales de la Faculté des Sciences, Université Clermont Ferrand*, 36, 109-144.
- [10] TOTEU, S.F., W.R. VAN SCHMUS., J. PENAYE., A. MICHARD (2001). New U–Pb and Sm–Nd data from north-central Cameroon and its bearing on the pre-Pan African history of central Africa. *Precambrian Research* 108 (2001) 45-73.
- [11] TCHAMENI, R., POUCKET A., PENAYE J., GANWA A.A., TOTEU S.F., (2006). Petrography and geochemistry of the Ngaoundere pan-African granitoids in central North Cameroon: implication of their sources and geological setting. *Journal of African earth sciences* 44 (4-5), 511-529.
- [12] TOTEU, S.F., PENAYE, J., DELOULE, E., VAN SCHMUS, W.R., TCHAMENI, R., (2006). Diachromous evolution of volcano sedimentary basin north of the Congo craton : Insights from U-Pb ion microprobe dating of zircon from the Poli, Lom and Yaoundé groups (Cameroun). *Journal of Africa earth Sciences* 44, 428-442.
- [13] NGAKO, V., JEGARZO, P., NZENTI, J.P., (1992). Champ de raccourcissement et de cratonisation du Nord Cameroun du paléoprotérozoïque supérieur au paléozoïque moyen. *C. R. Acad. Sci. Paris* 315, 371-377.
- [14] NZENTI, J.P., NGAKO V., KAMBOU R., PENAYE J., BASSAK., NJEL U. O., (1992). Structures regionales de la chaîne panafricaine du Nord-Cameroun. *C.R. Acad. Sci. Paris. 315 série II*, 209-2015.
- [15] NZENTI J.P., BADIBANGA K., GERHARD W., TOTO R, L. 2006. Synkinematic emplacement of granitoids in a Pan-African shear zone in Central Cameroon. *Journal of African Earth Sciences*, 45: 75-76.



© The Author(s) 2022. This article is an open access article distributed under the terms and conditions of the Creative Commons Attribution (CC BY) license (<http://creativecommons.org/licenses/by/4.0/>).